

---

**ADDENDUM NO. 4**

The following general questions have been received and the responses are as follows:

Q1. *Is there any electric work needed for the two (2) flowmeters at the control structures?*

No, see attached revised drawings C314 and C316 for removal of the flow meters associated with the SB12.8 lateral and SB13.6 screening structure. The intent of the original callouts was for the meters to be mechanical registers that do not require electrical power. However, the District has decided that existing flow monitoring further downstream will suffice and the new meters can be omitted from the bid.

The following attached changes are incorporated into requirements for the Project No. 33-SBC-1008 Contract Documents by this Addendum:

Attachment 1: Drawing C314

- Added Revision 1 for removal of the flow meter from SB12.8 shown in Section 156+00.39.

Attachment 2: Drawing C316

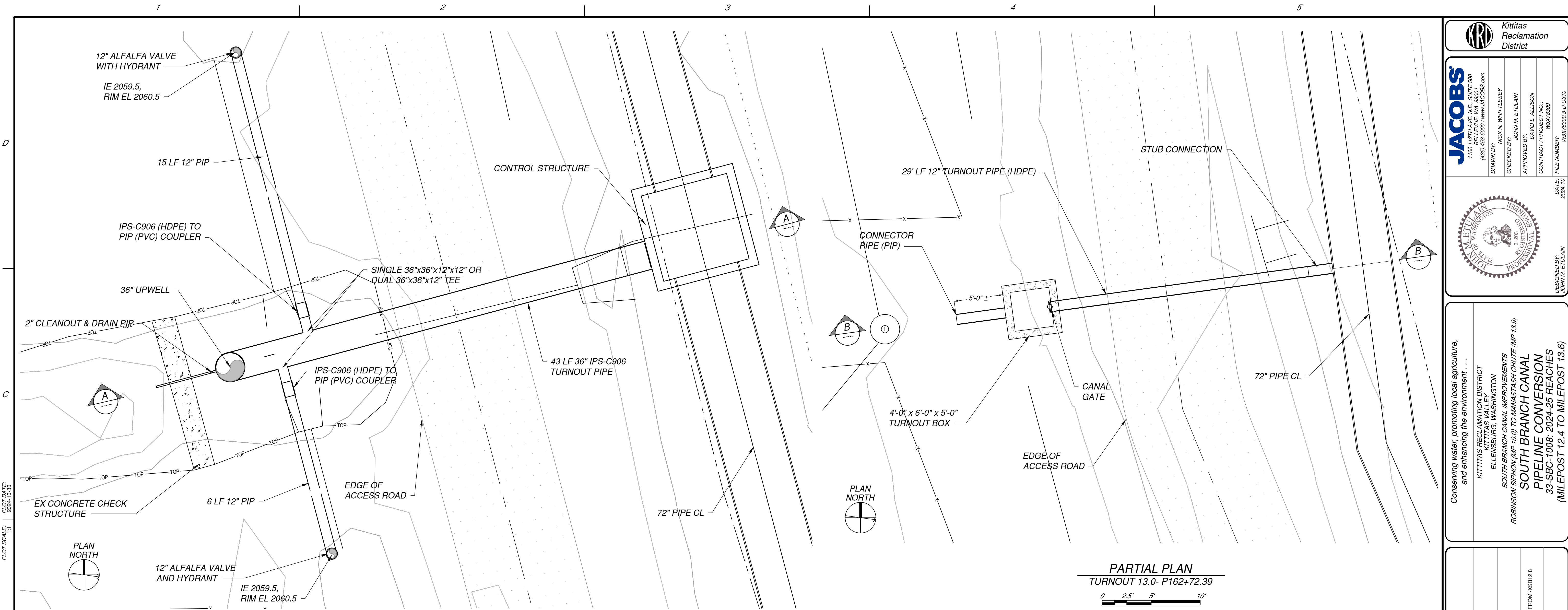
- Added Revision 1 for removal of the flow meter from SB13.6 shown in Section 198+34.38.

KITTITAS RECLAMATION DISTRICT

Dated this 30th day  
of October, 2024

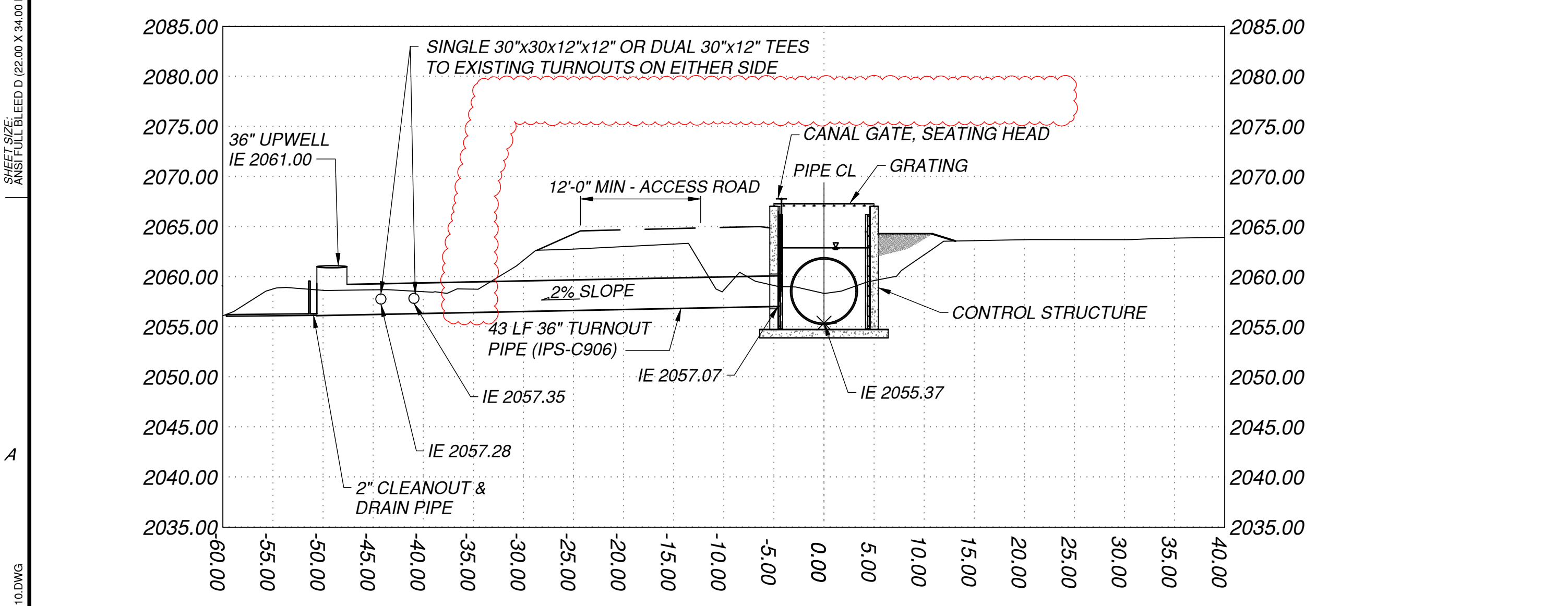
By: \_\_\_\_\_  
David Allison

Title: \_\_\_\_\_  
Engineer

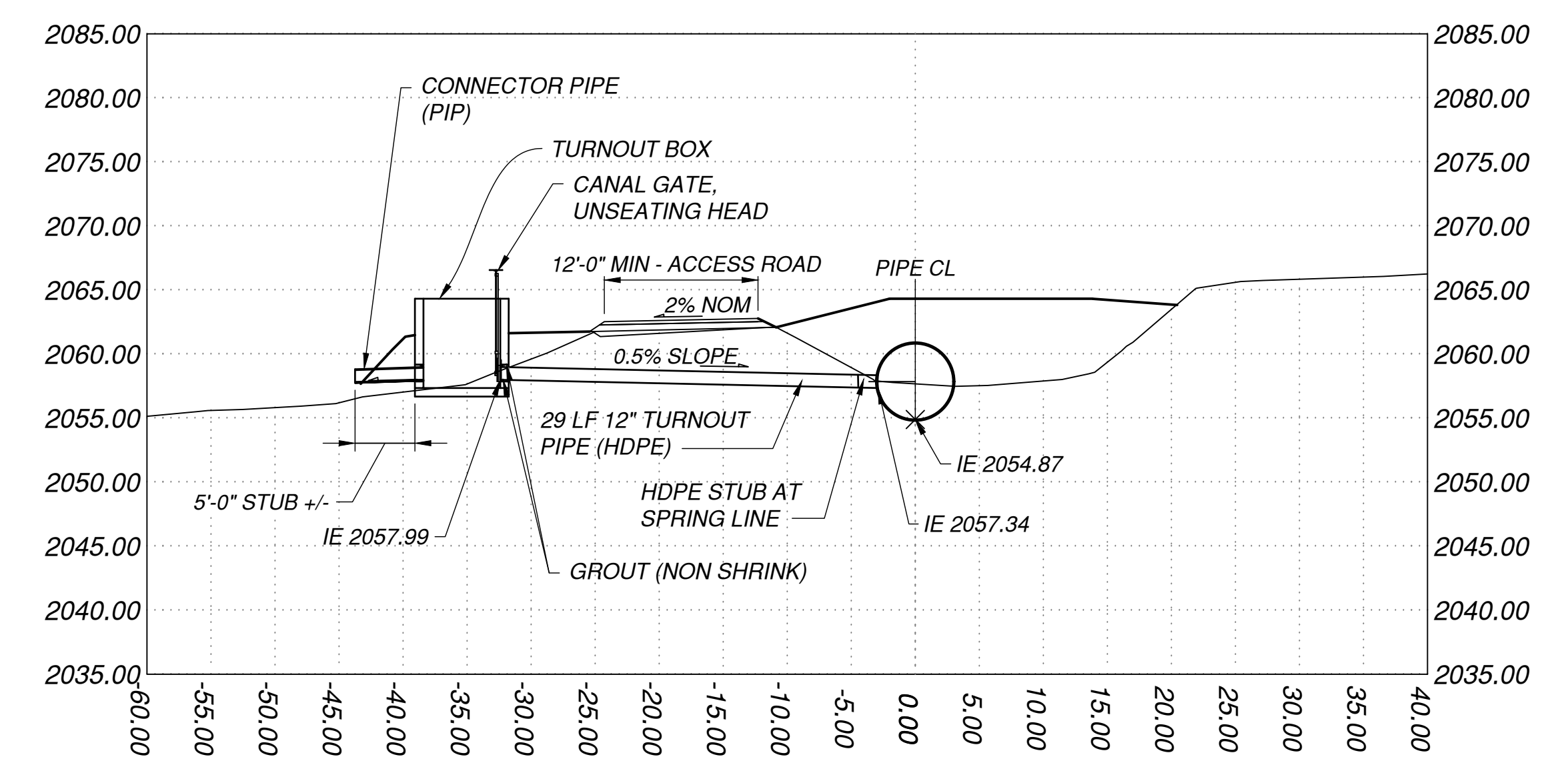


**PARTIAL PLAN**  
CONTROL STRUCTURE 12.8 - P156+00.39  
SCALE: 1"=5'

**PARTIAL PLAN**  
TURNOUT 13.0- P162+72.39  
SCALE: 1"=5'



**T-CONNECTION SECTION**  
A-A  
156+00.39



**T-CONNECTION SECTION**  
B-B  
167+72.39

SHEET SIZE: ANSIBL (BLEED D) (22.00 X 34.00 INCHES)  
 PLOT SCALE: 1"=5'  
 PLOT DATE: 2024.10.26  
 FILE NAME: W3278393.DWG  
 811 Know what's below. Call 811 before you dig.

**JACOBS**  
 1100 112TH AVE. N.E. SUITE 600  
 BELLEVUE, WA 98004  
 (425) 453-5000 / www.jacobs.com

DRAWN BY: NICK N. WHITLESEY  
 CHECKED BY: JOHN M. ETULAIN  
 APPROVED BY: DAVID L. ALLISON  
 CONTRACT / PROJECT NO.: W3278393  
 DATE / FILE NUMBER: 2024-10 / W3278393.3-D-C310  
 DESIGNED BY: JOHN M. ETULAIN

Conserving water, promoting local agriculture, and enhancing the environment . . .

KITTITAS RECLAMATION DISTRICT  
 ELLENSBURG, WASHINGTON  
 SOUTH BRANCH CANAL IMPROVEMENTS  
 ROBINSON SIPHON (MP 10.0) TO MANASTASH CHUTE (MP 13.9)  
**SOUTH BRANCH CANAL PIPELINE CONVERSION**  
 33-SBC-1008; 2024-25 REACHES  
 (MILEPOST 12.4 TO MILEPOST 13.6)

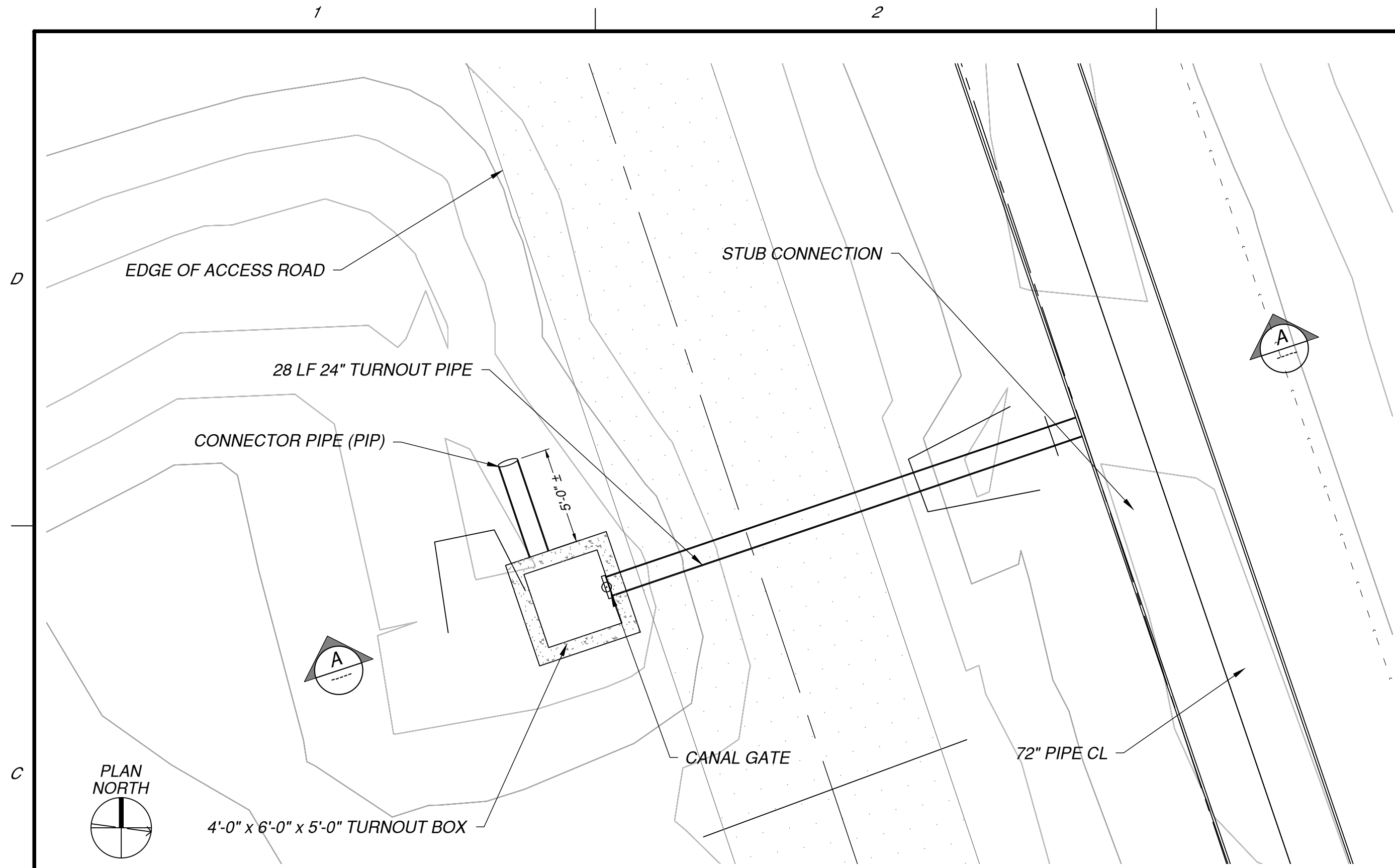
REV. NO.	DESCRIPTION	DATE
1	REMOVED FLOW METER FROM XSBI2.8 SECT. 156+00	10-30-2024
0	ISSUED FOR BIDDING	10-04-2024

CONSULTANT PRODUCED BY

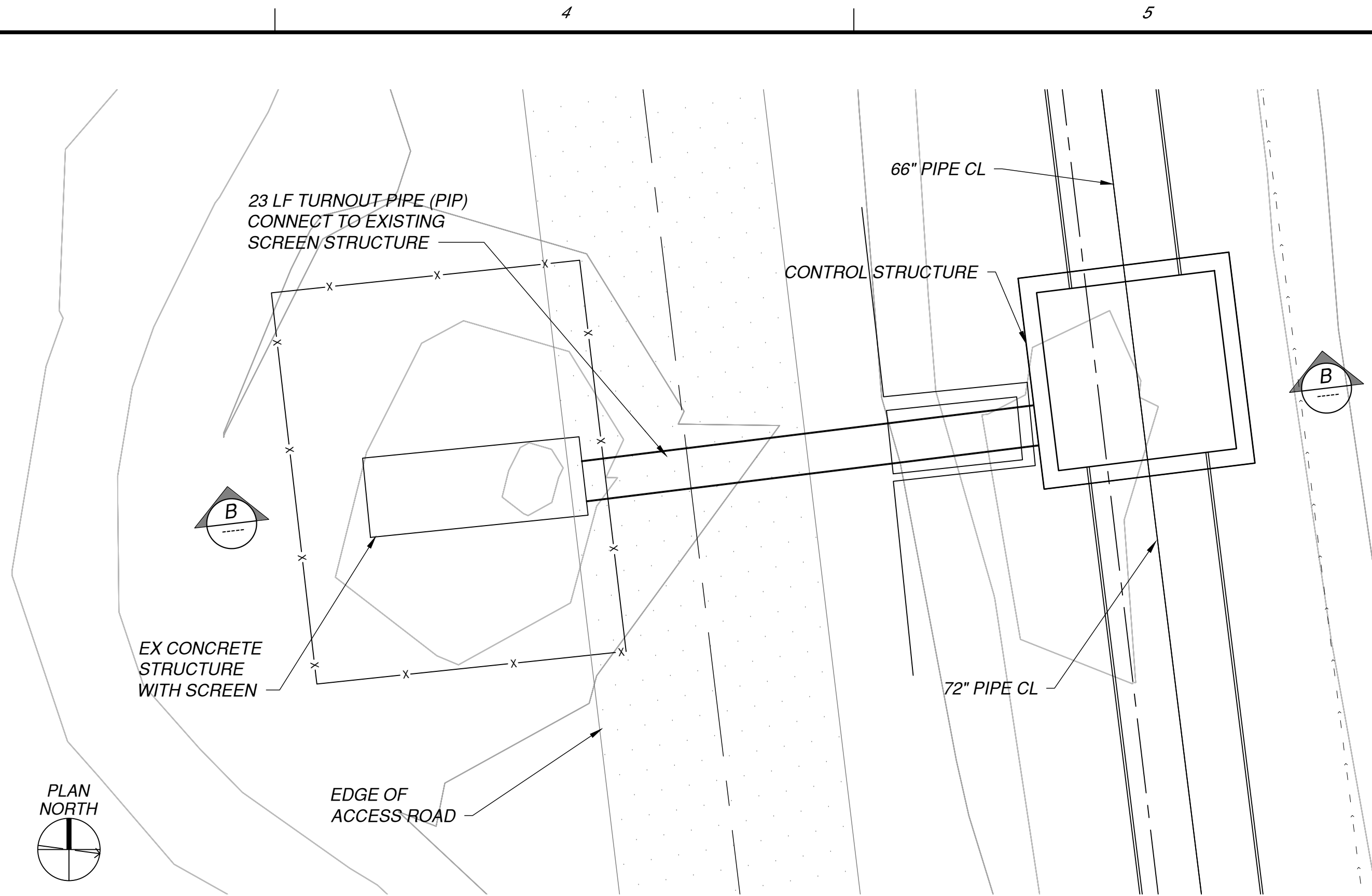
X ACCEPTANCE FOR ADMINISTRATOR TITLE

ELLENSBURG, WA 2024-10  
 LOCATION DATE

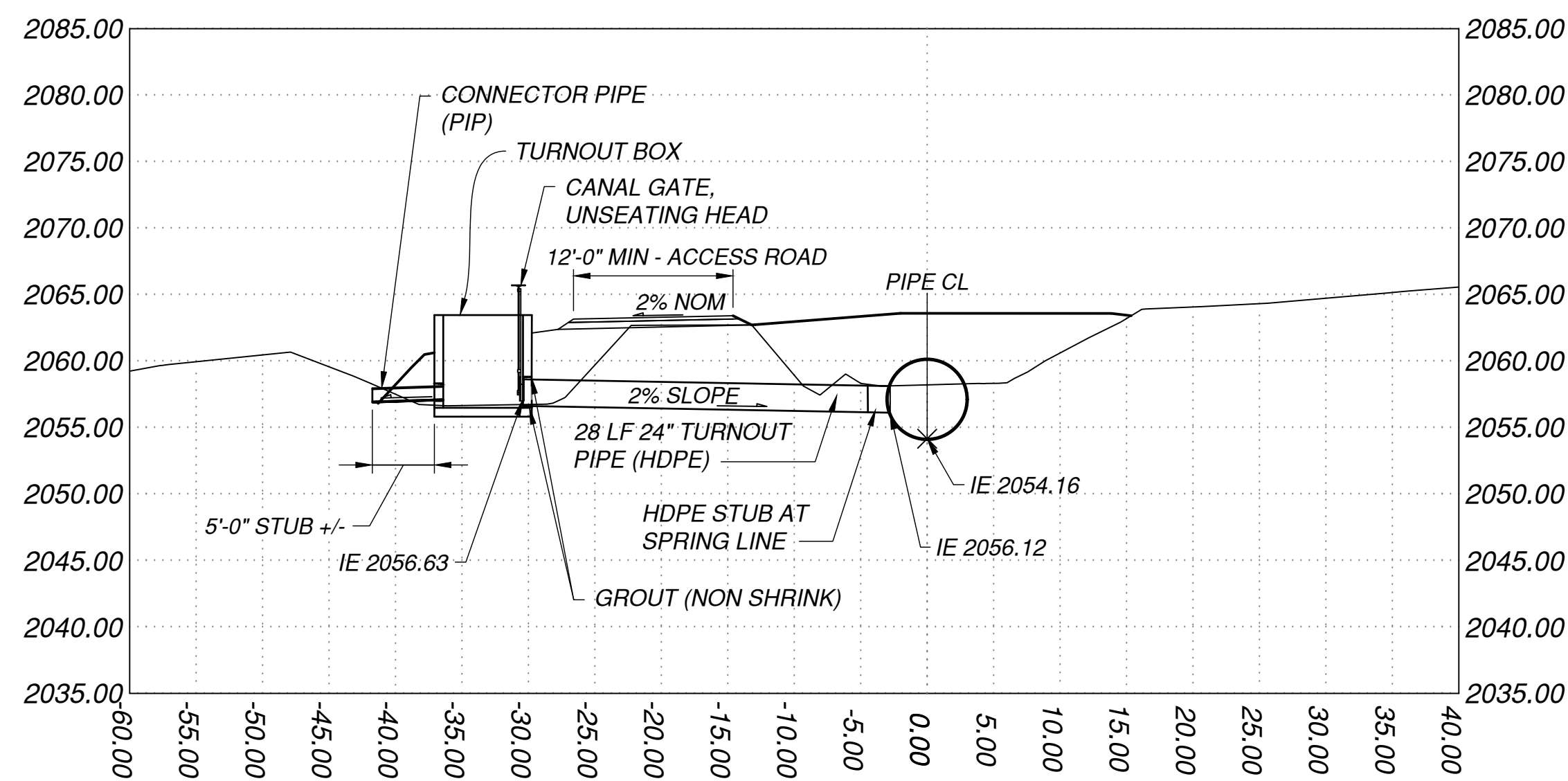
**CONTROL STRUCTURE 12.8 & TURNOUT 13.0**  
TURNOUT PLAN & SECTION VIEWS



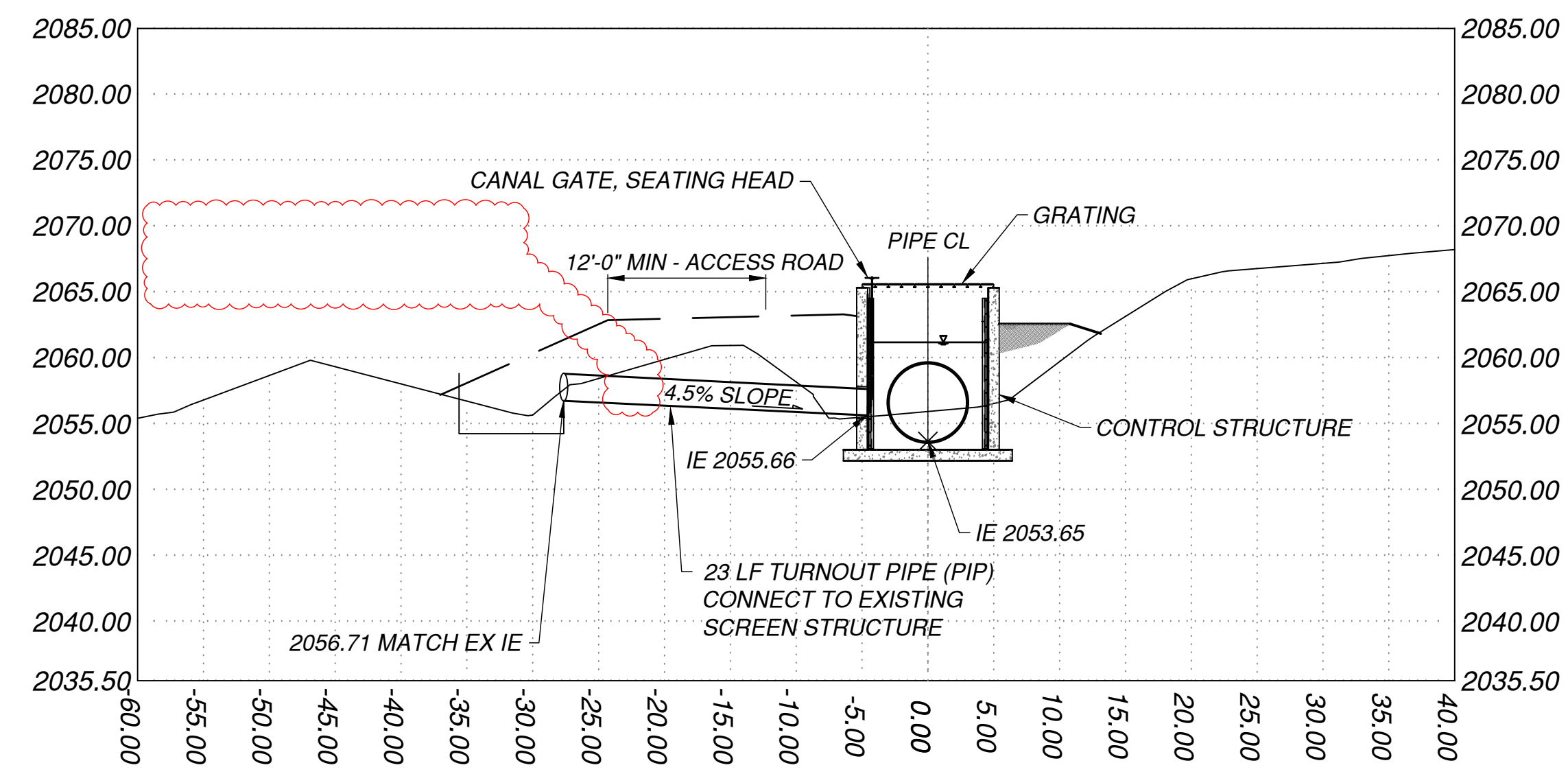
**PARTIAL PLAN**  
TURNOUT 13.4 - P185+19.39  
SCALE: 1"=5'



**PARTIAL PLAN**  
CONTROL STRUCTURE 13.6 - P198+34.38  
SCALE: 1"=5'



**T-CONNECTION SECTION**  
A



**T-CONNECTION SECTION**  
B

PLOT SCALE: 1"=5'

SHEET SIZE: ANSIFULL BLEED D (22.00 X 34.00 INCHES)

A

FILE NAME: W3278393.3.D-C310.DWG



**Kittitas Reclamation District**

**JACOBS**  
1100 12TH AVE. N.E. SUITE 600  
BELLEVUE, WA 98004  
(425) 453-5000 / www.jacobs.com

DRAWN BY: NICK N. WHITLESEY  
CHECKED BY: JOHN M. ETULAIN  
APPROVED BY: DAVID L. ALLISON  
CONTRACT / PROJECT NO.: W3278393  
DATE: FILE NUMBER: W3278393.3.D-C310  
2024-10

DESIGNED BY: JOHN M. ETULAIN

Conserving water, promoting local agriculture, and enhancing the environment . . .

KITTTAS RECLAMATION DISTRICT  
ELLENSBURG, WASHINGTON  
SOUTH BRANCH CANAL IMPROVEMENTS  
ROBINSON SIPHON (MP 10.0) TO MANASTASH CHUTE (MP 13.9)  
SOUTH BRANCH CANAL  
PIPELINE CONVERSION  
33-SBC-1008: 2024-25 REACHES  
(MILEPOST 12.4 TO MILEPOST 13.6)

REV. NO.	REV. DATE	REV. DESCRIPTION
1	10-30-2024	REMOVED FLOW METER FROM XS813.6 SECT. 188-34
0	10-04-2024	ISSUED FOR BIDDING

CONSULTANT PRODUCED BY

X ACCEPTANCE  
PRD ADMINISTRATOR TITLE

ELLENSBURG, WA 2024-10  
LOCATION DATE

**TURNOUT 13.4 & 13.6 CONTROL STRUCTURE**  
TURNOUT PLAN & SECTION VIEWS